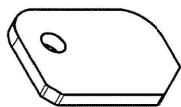


PŘEKLAD

dne 17. 12. 2014

PROVEDLA

Visa 20.



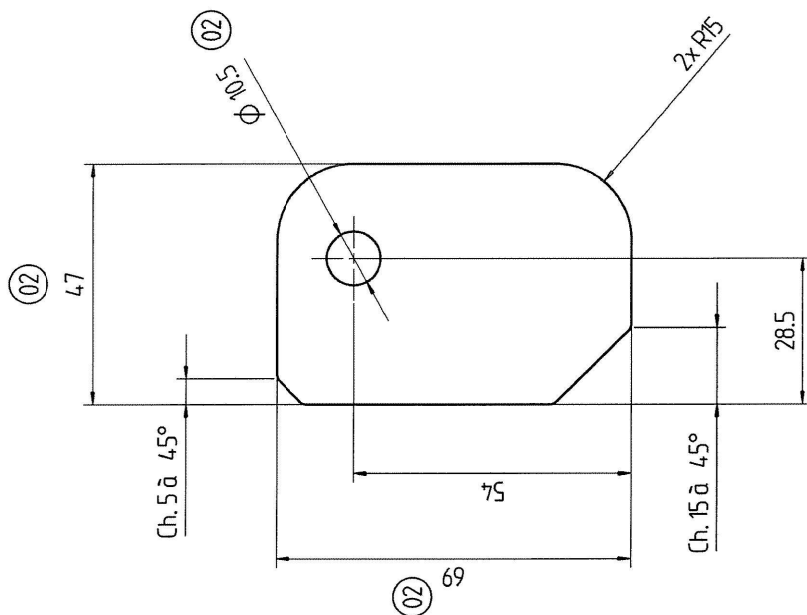
LOUSTKA 1747
NEKST. 2431004
RADIUS 00700
ROZLOŽENÁ - DEKA

- 2 - 03 - 2015

ARCHIV

2

✓ N2 14/01402



NOTA :
- Metal sheet thickness : 6 mm
- Radii without dimension : R = 2
- Bend radii : R = 1
- Unfolded length (for info) = 1

Condition at time of delivery	
de-scaled (degree of purity SA 2 1/2 acc. ISO 8501-1)	X
without burrs acc. WN 1310	
Permissible top-end rounding during flame cutting (also positive bead acc. WN 10572)	
oil-free / free of grease	
oiled	
oiling permissible	X
Indicate the required condition at time of delivery with an X.	

02

LASER cutting tolerances			
NOTA : min cutting radius without dimensions R = 1 mm unless otherwise specified			
≤ 30	30 < ≤ 120	120 < ≤ 400	400 < ≤ 1000
± 0,5	± 0,8	± 1,0	± 1,5
			± 2,0

02	Oiled --> Oiled permissible 09 --> 010.5 / Dim. 78 --> 47 Dim. 112 --> 69	alteration	Material: S235JR following EN10025-2	Weight: 0.3 in kg
First angle projection	Index	Blank no:	Title: support mounting ring	PROD. Scale 1:1
General Tolerance (GT) in mm	Inspection dim. Auxiliary dim.	Date	Drawn	Sheet: 1 of: 1
Size range	Drawn	Checked	Auth'd	
GT course	1 2 3 4	1 2 3 4	1 2 3 4	
L 1 2 3 4	1 2 3 4	1 2 3 4	1 2 3 4	
Lengths (L) and angle (L/L) = ± GT	Lengths (L) and angle (L/L) = ± GT	Lengths (L) and angle (L/L) = ± GT	Lengths (L) and angle (L/L) = ± GT	
0 roundness = 1/2a-Tol.	0 straightness/flatness = GT	0 concentricity/un out = GT	0 symmetry = GT	
0 parallelism = GT	0 position = GT			
en,fr	Confidential document	Refer to protection notice ISO 10006 Repl.	Drawing number 11914010902	Org. 1914010902d001